

**PACKAGING AND SPECIAL TRANSPORT STRUCTURE
SPECIFICATIONS FOR POLYESTER PARTS****QUALITY MANAGEMENT SYSTEM – PROCEDURE**

MODIFICATIONS

EDITION	DATE	DESCRIPTION
-	26/01/2011	Initial Edition
A	25/04/2016	Change name from "Vossloh" to "Stadler Rail Valencia S.A.U."

	DEPARTMENT	NAME:	SIGNATURE:	DATE:
DRAFTED	LOGISTICS	JAVIER MORA		22/04/16
REVISED	LOGISTICS	JUAN MUÑOZ		22/04/16
APPROVED	QUALITY	ALFONSO ESTEVAN		25/04/16

CONTENTS

1	OBJECTIVE	PAGE 3
2	SCOPE OF APPLICATION	PAGE 3
3	CHARACTERISTICS OF PACKAGING AND SPECIAL STRUCTURES FOR POLYESTER PARTS	PAGE 3

1 OBJECTIVE

These specifications are aimed at setting out the requirements for packaging. This implies:

- Guaranteeing that the materials do not suffer any damage during transport and storage, throughout the supply chain,
- Avoiding accidents and lowering the costs from rejects and labour,
- Decreasing the space used for storage, and
- Facilitating monitoring of the material and inventory recounts.

2 SCOPE OF APPLICATION

The supply criteria established in these specifications shall apply to all packages and special transport structures for polyester parts supplied to Stadler Rail Valencia S.A.U.

For the first shipments it is very important to pay special attention to the method described for acceptable and appropriate packaging. Should any doubt arise, contact the corresponding logistics officer at Stadler Rail Valencia S.A.U.

3 PACKAGING CHARACTERISTICS

3.1 General considerations

Packaging: All polyester parts must be protected with plastic bubble wrap, with the exception of cab cars.

The parts must also be duly moored within their transport structure. They must be secured so as to assure the good condition of the part, i.e., so that any movement of the part that could cause blows, scratches, etc. is avoided.

Special structures: All special transport structures must be primed and equipped with protection at all areas that could come into contact with the polyester parts.

The special transport structures or packaging required for new polyester parts in new projects shall be described by the engineering department as they arise.

3.2 Description of special transport structures and packages

In addition to the general features described above, the type of packaging and transport structure will depend on the kind of polyester part involved. The specific details of transport structures and packages are described below, depending on the kind of part:

CAB CARS

The cab car must be delivered atop a wooden pallet that can be handled by a forklift, and properly anchored in order to avoid movement during transport.

Bubble wrap is not necessary, but plastic wrap must be used to protect those sides that are in contact with the anchoring structure, or that could be susceptible to scratches, in order to avoid deep marks that could require body work.

SMALL CAB PARTS (control desks, covers, etc.)

These parts must be duly wrapped and their edges protected with polyspan. They must be stored in a wooden box for transport. They must be arranged and secured inside the box in such a way as to avoid movement and blows during transport.

SKIN PANELS

These parts must be delivered in a special structure such as that shown in the image below:



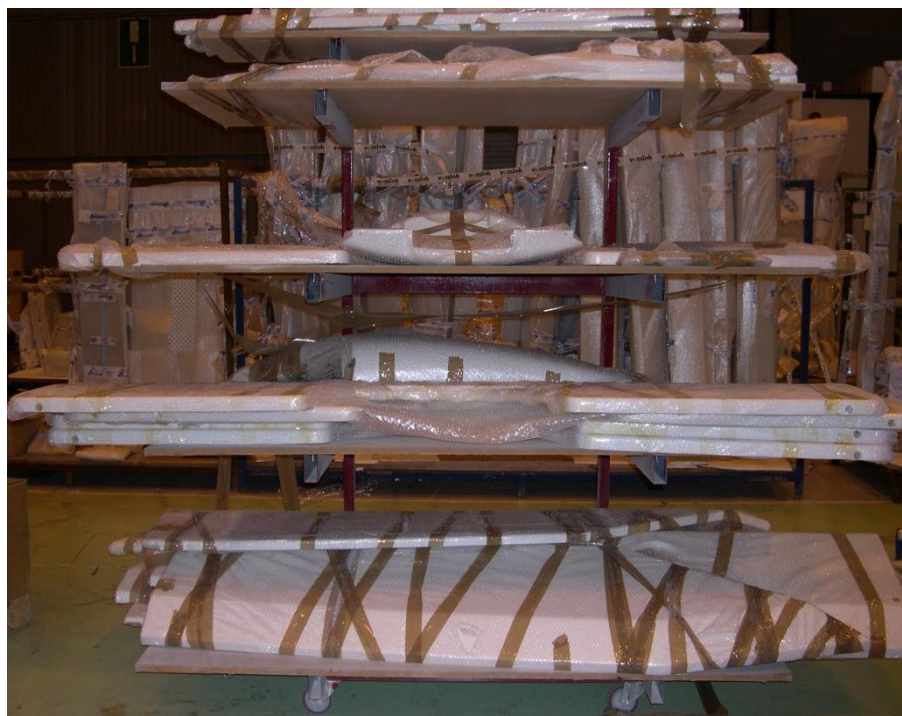
The lateral support bars of the transport and storage structure must be protected. Such protection must be done with polyspan or something similar.

This image shows how the bars should be protected.



TRAP DOORS (central and window)

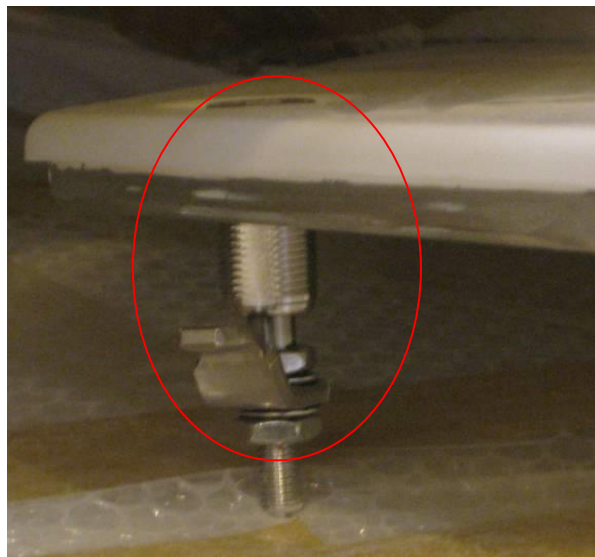
These parts must be transported and arranged in a structure such as the one in this image:



The parts must be duly protected and properly moored within their transport structure, in order to guarantee that there will be no movement of the part during transport that could cause blows, scratches, etc.

These parts must also be arranged in pairs within the transport structure, in such a way that the good surface of one part faces the good surface of the other. The idea is to avoid the metal inserts on the bad side of one part damaging the good side of the other.

Here is an example of what to avoid:



DOOR BRACES

The kind of special structure used for transporting door braces shall depend on their width:

- Widths of over 200 mm.

If the door braces are very wide (width of over 200 mm.), the conditions for the special transport structure and packaging shall be the same as those for the trap doors.

The difference, due to the shape of the part, is that in this case the part must be arranged on the structure with its blades pointing upwards. No part should be placed on top.

The parts must be well-anchored to avoid movement, but care must be taken not to cause deformations on the part blades with the form of anchoring.

- Widths of 200 mm.

If the width of the door braces is under 200 mm., they can be delivered in an upright position, in a structure similar to that shown below:



When the door braces are arranged on the transport structure, they should be properly secured in order to avoid movement that could cause blows, scratches, etc.

BANDINGS

As with the other parts, bandings should be delivered inside of a wooden box with the proper protection. They should be properly secured within the box so as to avoid blows, scratches, etc.

CAB ELECTRICAL CABINETS

Cab electrical cabinets can be arranged in the transport structure either standing or lying down, as long as their position on the structure does not cause tension.

See image below:

